

THERMAL NIGHT VISION CAMERAS

Thermal night vision cameras from Raymarine give captains the confidence to navigate safely in total darkness.

Engineered with genuine FLIR thermal imaging technology, Raymarine's thermal night vision cameras are designed for simple, seamless operation with Raymarine multifunction displays.

Day or night, thermal imaging cameras deliver enhanced levels of safety and situational awareness, allowing you to clearly see other vessels, navigation hazards, buoys, and much more.

Handheld, Fixed-Mount, or Full-Motion Systems

Previously reserved for military, law-enforcement and ultra-luxury vessels only, thermal night vision technology is now available for every boater.

Choose from the portable TH-Series marine scopes or the affordable T200 series fixed mount thermal cameras. For a 360 degree view, step up to T300 and T400 with pan, tilt and zoom.

Your night vision



Thermal night vision



Every Raymarine thermal night vision camera offers:

Superior FLIR thermal imaging technology. As the worldwide leader in thermal technology, FLIR Systems are the choice of military and law enforcement professionals.

Ease of use. As simple as watching and controlling your TV.

Day and night operation. Thermal imaging camera systems are amazing at night, but are also just as effective at seeing through bright sun, glare, haze and more.

The best man-overboard detection. If one of your crew should fall overboard, a Raymarine thermal camera is your best bet in low visibility to find and track them so you can quickly get them back on board.



TH-Series Handheld Thermal Night Vision

- Two models available: TH24 and TH32
- Simple three-button operation
- Rugged all-weather design
- Long-life rechargeable Li-ion battery
- 24° and 18° field of view



T200 Series Thermal Night Vision

- Compact, fixed mount cameras
- Look-ahead visibility, targeting objects in the vessel's path
- Simple installation
- Easy integration with Raymarine multifunction displays
- User-selectable color palettes for enhanced on-screen visibility
- 2x and optional 4x digital zoom for enlarging far-away targets
- Standard and high-resolution options





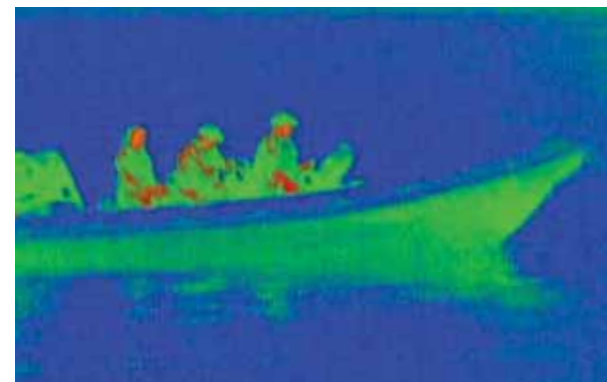
eSeries MFD with dual-payload T400 Series thermal camera



T300 and T400 Series Thermal Cameras

- Full pan, tilt and zoom capabilities
- Simple touchscreen control from Raymarine multifunction displays. Simply swipe your finger to slew the camera
- T300 models feature single payload thermal camera standard or high-resolution FLIR thermal imagers
- T400 dual-payload models add a high-resolution day/night lowlight camera. Anywhere your eyes can see just a little, the lowlight camera will show you a whole lot more
- Optional 2-axis gyro-stabilized models provide steady imagery in heavy seas and a color low-light camera with 10x optical zoom

T300 Series
single-payload thermal camera



RIB and crew clearly visible in this midnight image



Thermal image of bridge structure at night and what the human sees (inset)



Dockside cranes (1) and ferry boat (2) at night with hot funnels glowing



360° continuous pan and +/- 90° tilt

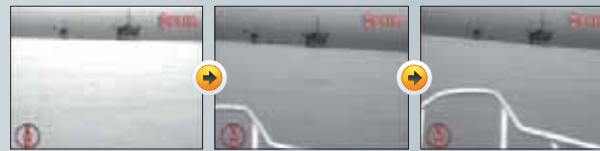
Slew-to-Cue Target Tracking. Slew-To-Cue improves situational awareness and safety. Thermal camera automatically keeps “cued” targets in view at all times

Chart Object Slew-to-Cue. Touch the display (cue) and the thermal camera automatically moves to the cursor position (slew), allowing you to keep chart objects like buoys or obstructions in constant view.

Auto Slew to AIS and MARPA Targets. T Series cameras and Raymarine MFDs can Auto Slew to dangerous MARPA and AIS targets, keeping dangerous targets in the camera’s sight during limited visibility situations.

MOB Auto Slew. The MFD and thermal camera will Auto Slew to a Man Over Board alarm location, maintaining the Man Over Board position in view at all times during a rescue situation.

Gyro stabilised imager; target still in view despite bow rise and fall



	TH and T-Series Range and Detection	
	MOB	Klein schip
TH24	320m (1.050ft)	895m (2.940ft)
TH32	450m (1.500ft)	1.230m (4.035ft)
T200/T203/T223/T220	450m (1.500ft)	1.280m (4.200ft)
T253/T250/T273/T270	820m (2.700ft)	2.200m (1.2nm)
T403/T400/T300/T303	450m (1.500ft)	1.280m (4.200ft)
T453/T450/T353/T350	820m (2.700ft)	2.200m (1.2nm)
T463/T460	1.200m (4.000ft)	3.200m (2.0miles)
T473SC/T470SC	1.200m (4.000ft)	3.900m (2.4miles)

Range and Detection

The range at which Raymarine thermal night vision cameras detect objects is shown in the table (right). However, actual object detection range performance may vary depending on camera set-up, environmental conditions, user experience and display type.

Thermal Cameras work with...



eSeries and cSeries MFDs



gS Series Glass Bridge Displays



Raymarine Control Apps

RayControl transforms tablets into both a viewer and full function, 2-way control; the tablet syncs with the multifunction display and users touch the tablet screen to control the MFD. RayControl also features ‘pop-out’ virtual keypad mirroring the MFD’s rotary controller and hard keys, enabling users to operate all available functions wirelessly and remotely. RayControl works with all of Raymarine’s eSeries, cSeries and gS Series MFD’s.